

cytoplasm

- 

lysosome

- 
- 

nucleolus

- 

vacuole & vesicles

- 
- 

nucleus

- 
- 

centrioles

- 

chromosomes

- 

mitochondria

- 

ribosomes

- 

cell membrane

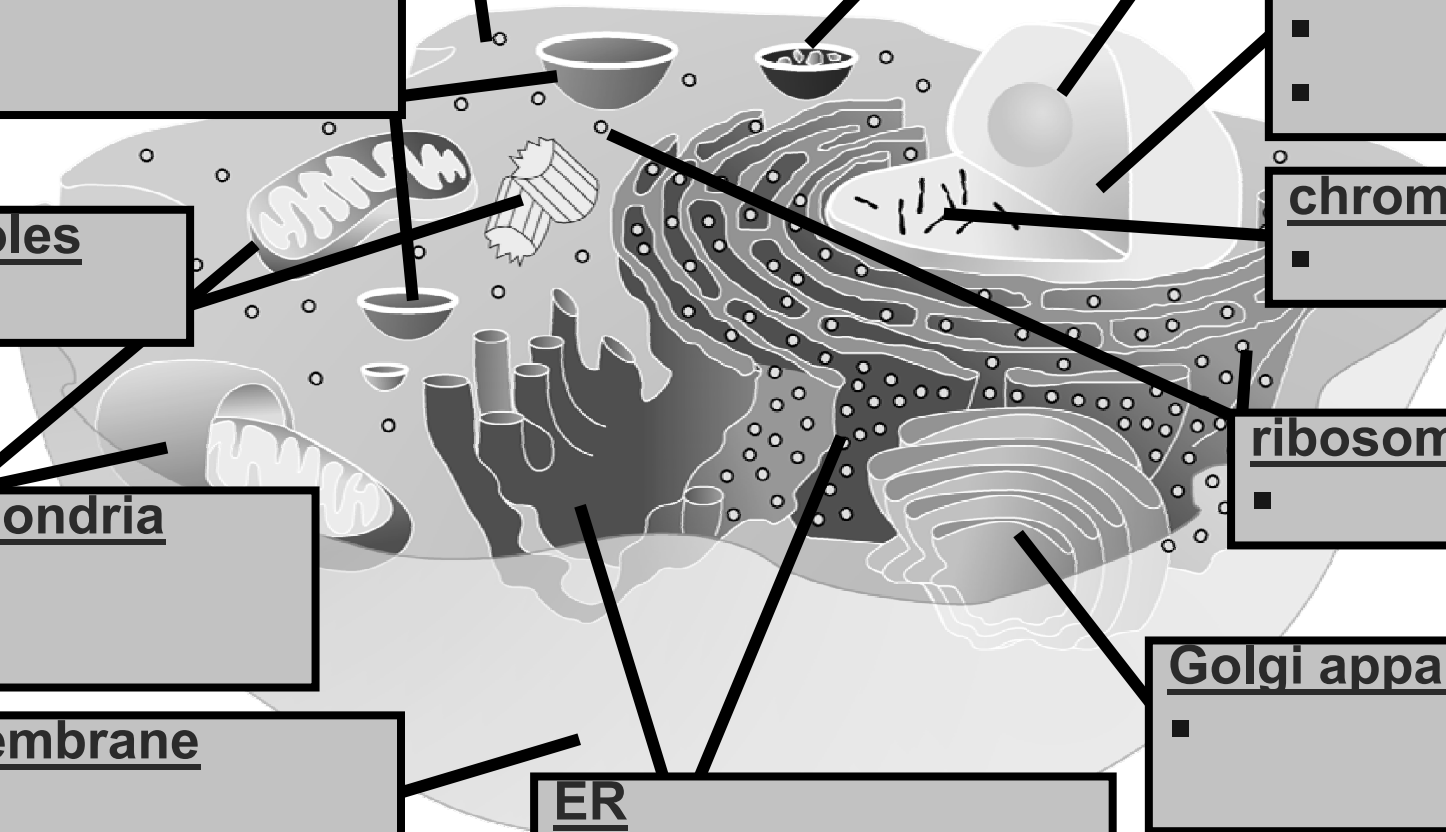
- 
- 
- 

ER

- 
- 

Golgi apparatus

- 



nucleus  
▪control cell  
▪protects DNA

cytoplasm

Golgi apparatus  
▪finish & ship  
proteins

mitochondria  
▪make ATP in  
cellular respiration

cell membrane  
▪cell boundary  
▪controls movement  
of materials in & out  
▪recognizes signals

endoplasmic reticulum  
▪processes proteins  
▪makes membranes

ribosomes  
▪make proteins

central vacuole  
▪

cell wall  
▪

chloroplast  
▪

