

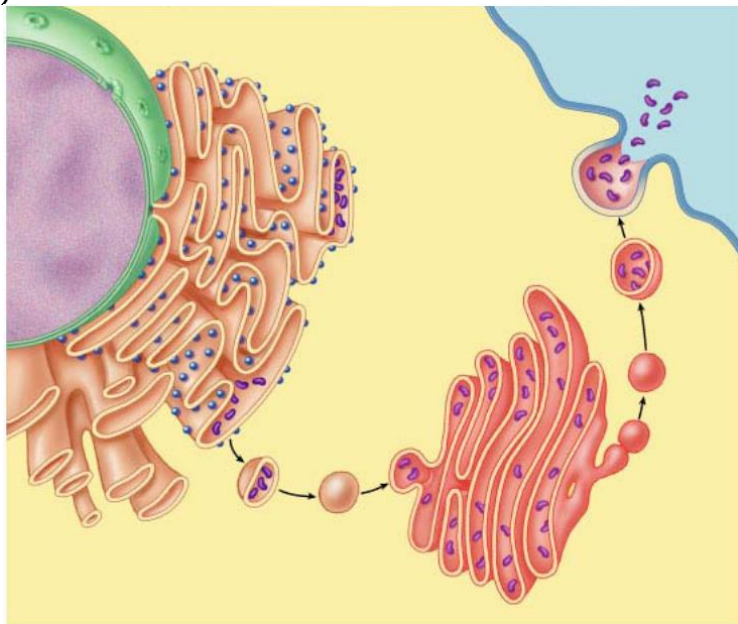
CHAPTER 5.2—5.4: Eukaryotic Cell Characteristics

1. For each of the cellular structures, indicate a few significant aspects. Include major functions and structural description.

Nuclear membrane
Chromatin
Nucleolus
Ribosome
Smooth ER
Rough ER
Golgi Apparatus
Lysosome
Vacuole

Mitochondria
Chloroplast
Extracellular Matrix

2. Trace the path of production of a protein-based secretion from a secretory cell. (Label the organelles involved)



3. Describe the Theory of Endosymbiosis and explain its relevance to eukaryotic cell structure.
