

CHAPTER 5.2—5.4: Eukaryotic Cell Characteristics

1. For each of the cellular structures, indicate a few significant aspects. Include major functions and structural description.

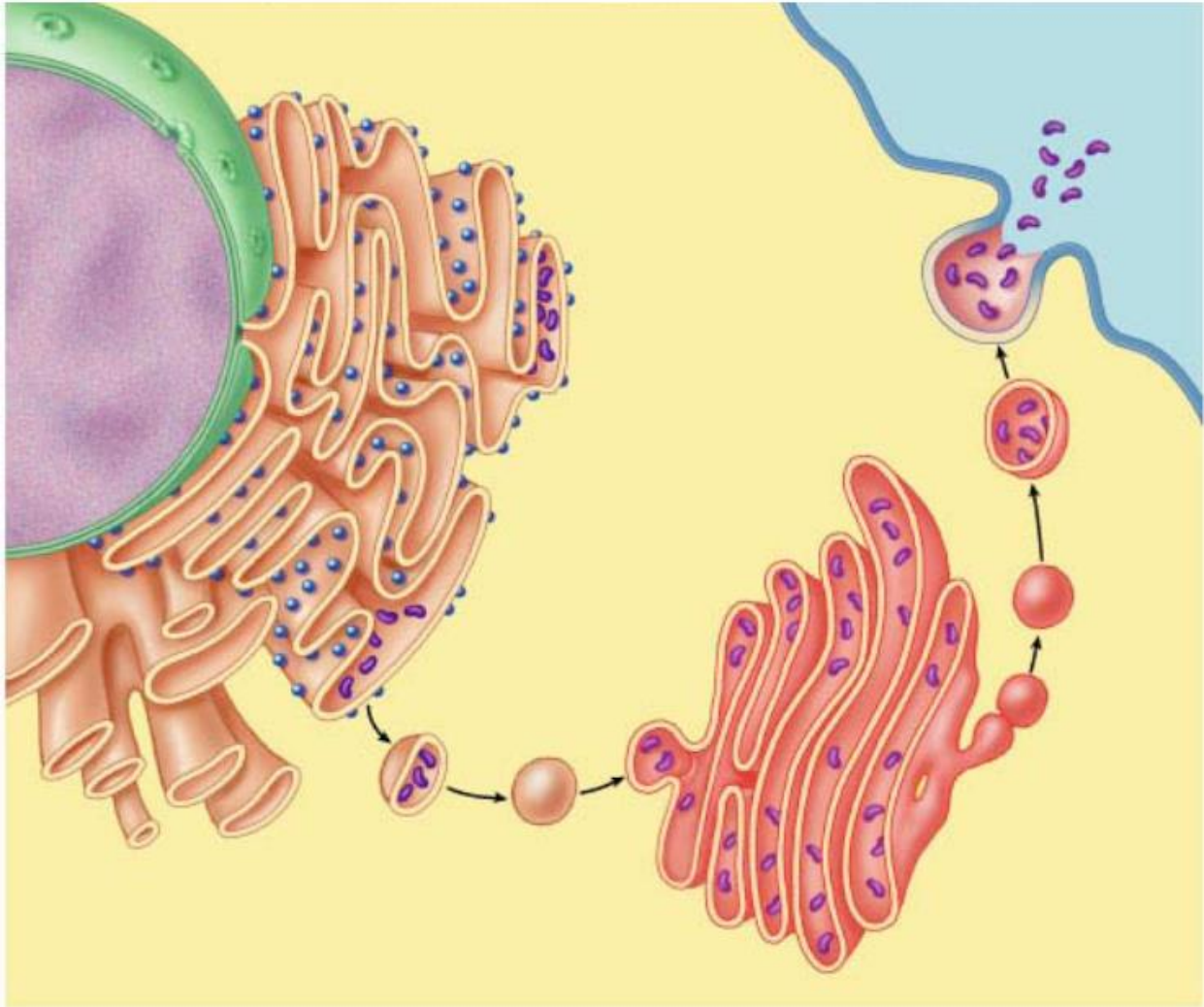
Nuclear membrane
Nuclear Pores
Chromatin
Nucleolus
Ribosome
Smooth ER
Rough ER
Golgi Apparatus
Lysosome

Name: _____

Question Set 10-13

Vacuole
Mitochondria
Chloroplast
Peroxisome
Cytoskeleton
Microtubule
Microfilament
Intermediate Filament
Centrioles
Extraceullular Matrix

2. Trace the path of production of a protein-based secretion from a secretory cell. (Label the organelles involved)



3. Describe the Theory of Endosymbiosis and explain its relevance to eukaryotic cell structure.
